

RUGGED'N READY 60" HIGH COUNTRY



STANDARD FEATURES INCLUDE

XTREME LINERS Xtreme frame and fenders

TIMBREN 2000Lbs Axle-Less® independent suspension

- Heavy-duty powder coated body panels
- Pintle hitch
- Receiver-style tongue
- Aluminum alloy rims
- Premium off-road tires (up to 35" tires)
- LED brake & marker lighting
- Automotive grade wire harness
- Heavy-duty front cargo rack
- Lockable tailgate
- Adjustable cargo management system
- 2" Rear Receiver
- Lighted license plate frame

Our 60" Rugged 'N Ready High Country Trailer™ is rugged enough to withstand the toughest trails and designed to follow wherever adventure takes you, no matter what terrain you traverse.

Paired with one of our roof top tents, it can serve as your base camp in any environment.

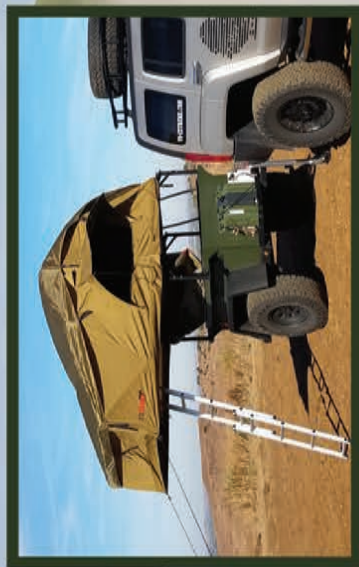


RUGGED'N READY 60" HIGH COUNTRY



DIMENSIONS:

Interior: 60" x 42" x 24" Storage Space: 35 Cubic Feet
Exterior: 118" x 70" x 50" Ground Clearance: 20"
(+24" w/ tailgate down) Base Trailer Weight: 860 lbs.



HD Front Cargo Rack

Heavy-Duty Powder Coated Body Panels

Pinle Hitch

Receiver-Style Tongue



Fenders & Frame



2000lbs
Axle-Less® Independent Suspension



RUGGED'N READY

Lockable Tailgate

2" Receiver Hitch

LED Brake & Marker Lighting

Aluminum Alloy Rims
(Up to 35" Tires)



Lean on, trust in, and be confident in the Lord with all your heart and mind and do not rely on your own insight or understanding. In all your ways know, recognize, and acknowledge Him, and He will direct and make straight and plain your paths. Proverbs 3:5-6